

Product Information

Short Nail

REF. NO.130°	REF. NO.125°	Size(20mm increments)
073980170	073900170	Φ9×170mm
073981200/073982200	073901200/073902200	Φ9×200mm(L/R)
073981240/073982240	073901240/073902240	Φ9×240mm(L/R)
074000170	073920170	Φ10×170mm
074001200/074002200	073921200/073922200	Φ10×220mm(L/R)
074001240/074002240	073921240/073922240	Φ10×240mm(L/R)
074020170	073940170	Φ11×170mm
074021200/074022200	073941200/073942200	Φ11×220mm(L/R)
074021240/074022240	073941240/073442240	Φ11×240mm(L/R)
074040170	073960170	Φ12×170mm
074041200/074042200	073961200/073962200	Φ12×200mm(L/R)
074041240/074042240	073961240/073962240	Φ12×200mm(L/R)

Long Nail

REF. NO.130°	REF. NO.125°	Size(20mm increments)
074531300-074531480	074451300-074451480	Φ9×300mm-480mm(L)
074532300-074532480	074452300-074452480	Φ9×300mm-480mm(R)
074541300-074541480	074461300-074461480	Φ10×300mm-480mm(L)
074542300-074542480	074462300-074462480	Φ10×300mm-480mm(R)
074551300-074551480	074471300-074471480	Φ11×300mm-480mm(L)
074552300-074552480	074472300-074472480	Φ11×300mm-480mm(R)
074561300-074561480	074481300-074481480	Φ12×300mm-480mm(L)
074562300-074562480	074482300-074482480	Φ12×300mm-480mm(R)

Lag Screw

REF. NO.	Diameter (mm)	Size
074250070-074250130	10.5	70-130mm (5mm increments)

Spiral Blade

REF. NO.	Size
074240070	Φ10.5×70mm
074240075	Φ10.5×75mm
074240080	Φ10.5×80mm
074240085	Φ10.5×85mm
074240090	Φ10.5×90mm
074240095	Φ10.5×95mm
074240100	Φ10.5×100mm
074240105	Φ10.5×105mm
074240110	Φ10.5×110mm
074240115	Φ10.5×115mm

End Cap

REF. NO.	Size	Type
071600000	0mm	Fixed
071600005	5mm	Fixed
071600010	10mm	Fixed
071600015	15mm	Fixed
071610000	0mm	Sliding
071610005	5mm	Sliding
071610010	10mm	Sliding
071610015	15mm	Sliding

Locking Screw

REF. NO.	Size
071210026-071210080	26-80mm(2mm increments)
071210085	85mm

Aimstrong Proximal Femoral Nail



Aimstrong Proximal Femoral Nail

Nail



Oblique cutting in proximal end prevent irritation to soft tissue.

Medial-lateral angle of 5° allows insertion at the tip of the great trochanter.

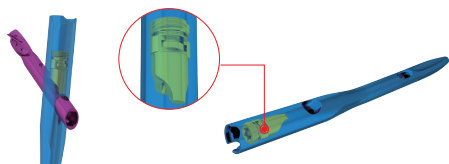
Available in 2 types—125° and 130°—for the clinics.

Distal fluted treating for easier insertion and avoid fracture from stress concentrating.

Anatomical anterior arch design.



Patented locking mechanism design, increase anti-rotation stability of the spiral blade.



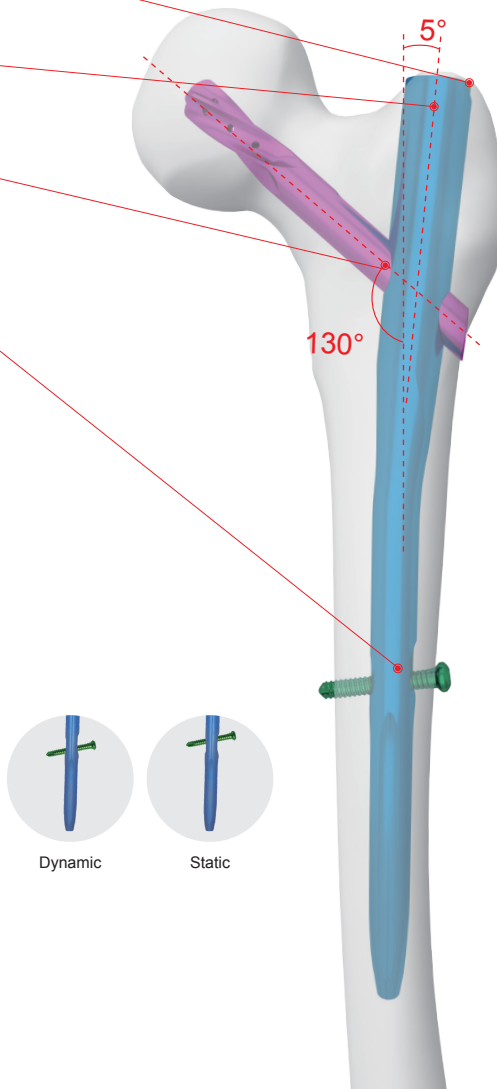
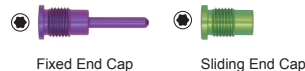
Locking Screw

- Self tapping facilitate intraoperative insertion.
- Locking screw designed with double lead thread for easier insertion.
- Strardrive design provide optimum torque transmission.



End Cap

- Available in fixed type and sliding type.
- The long end cap can stably fix the spiral blade, while the sliding one is convenient for compression operation.



Spiral Blade

- One-piece design increase blade stability and avoid difficulty of postoperative implant removal.
- Oblique cutting end reduce irritation of lateral soft tissue.
- Cement hole design facilitate cement injection, increase stability for osteoporosis patients.



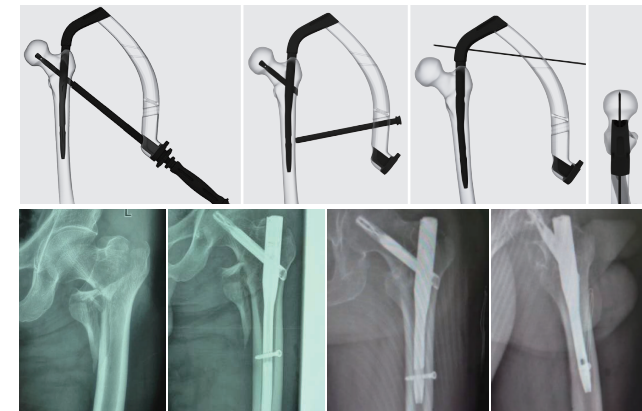
Lag Screw

- Specific for young patient with dense bone condition.



Aiming Shaft

- Made of carbon fiber material, provide unobstructed view during operation.
- One shaft for insertion of spiral blade and locking screw, no need to change instruments during operation.
- For unstable fracture, provide two k-wire hole for temporary anti-rotation fixation.



Indications & Contraindications

Short (170mm – 240mm)

Indications

- Pertrochanteric fractures
- Intertrochanteric fractures
- High subtrochanteric fractures

Contraindications

- Low subtrochanteric fractures
- Femoral shaft fractures
- Isolated or combined medial femoral neck fractures

Long (300mm – 480mm)

Indications

- Low and extended subtrochanteric fractures
- Ipsilateral trochanteric fractures
- Combination fractures (in the proximal femur)
- Pathological fractures

Contraindications

- Isolated femoral shaft fractures
- Isolated or combined medial femoral neck fractures

Warning

This flyer is just for understanding the specific product features. For clinical usage, please refer to the surgical guide. Instruction by experienced surgeon is highly recommended.